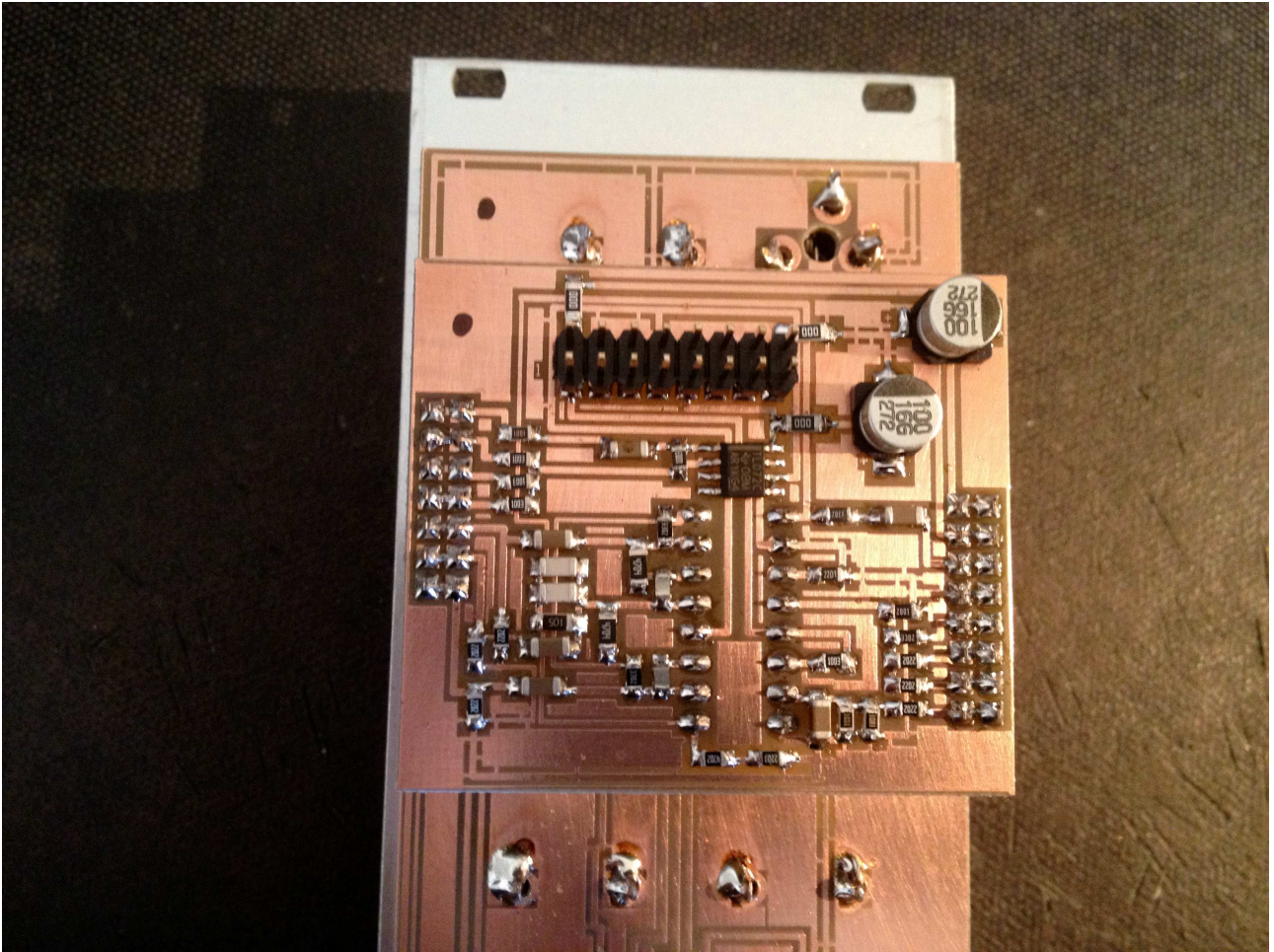
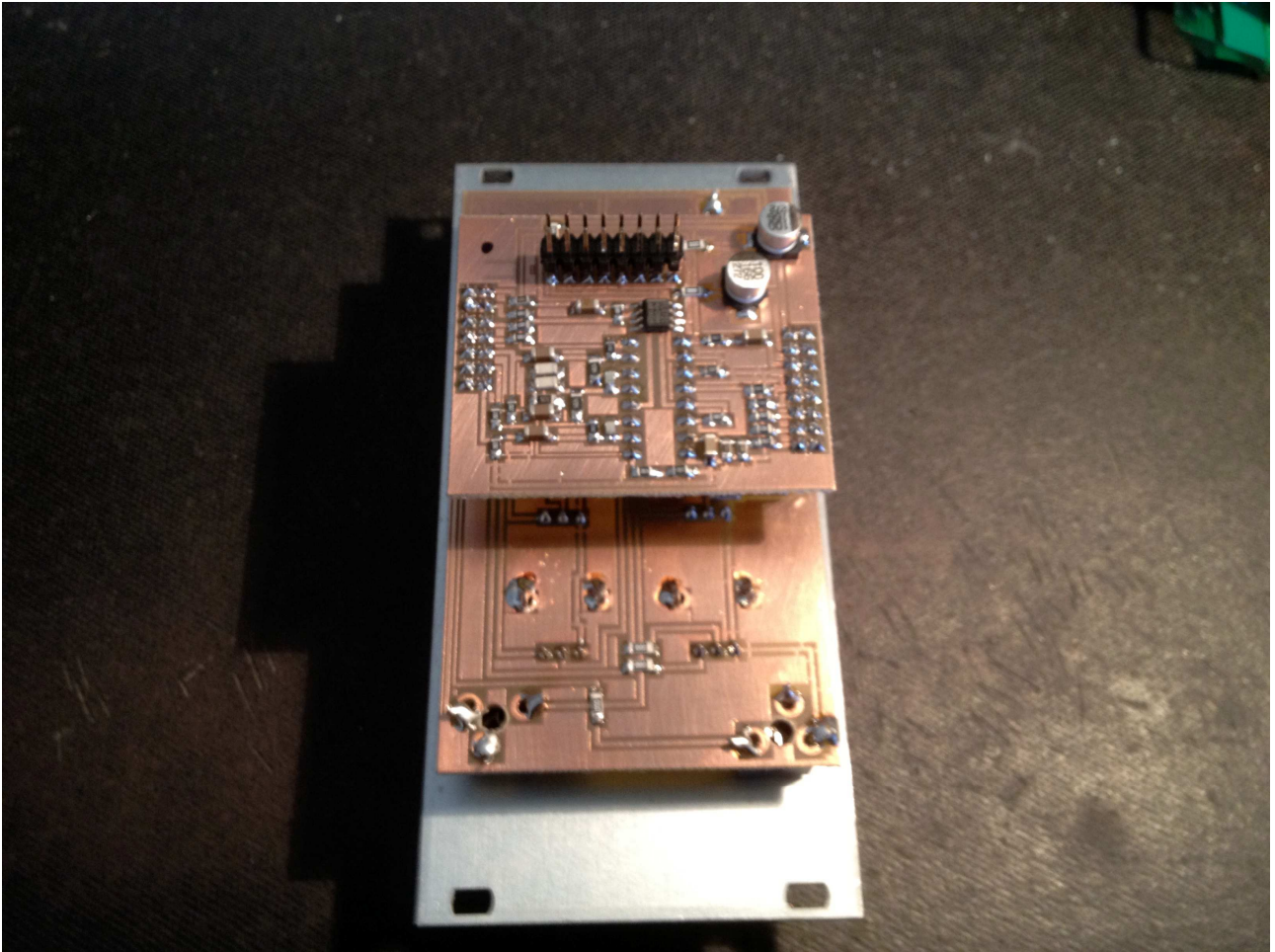


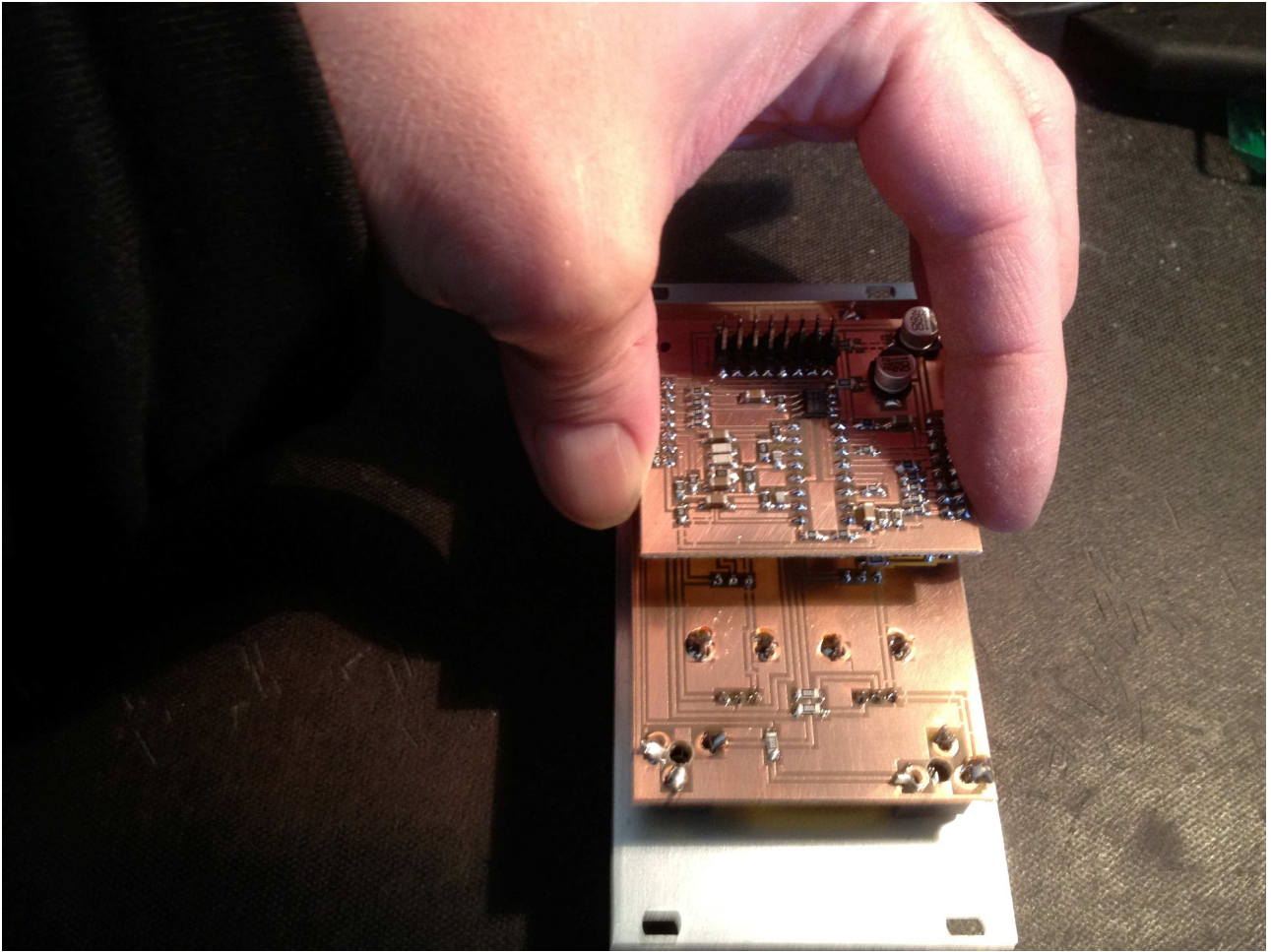
Gotharman's CS Filter



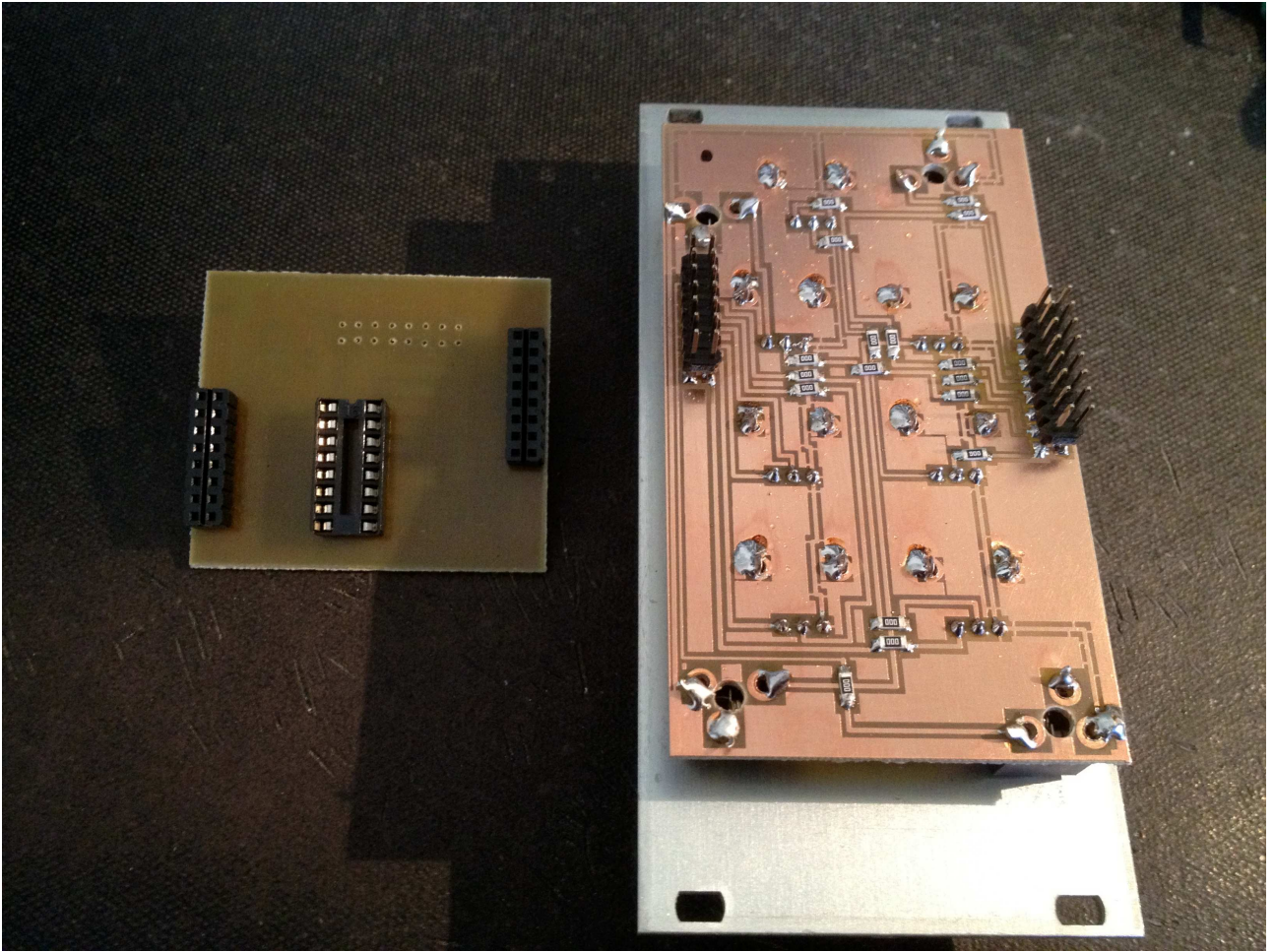
Mounting the Yamaha IG00156 chip

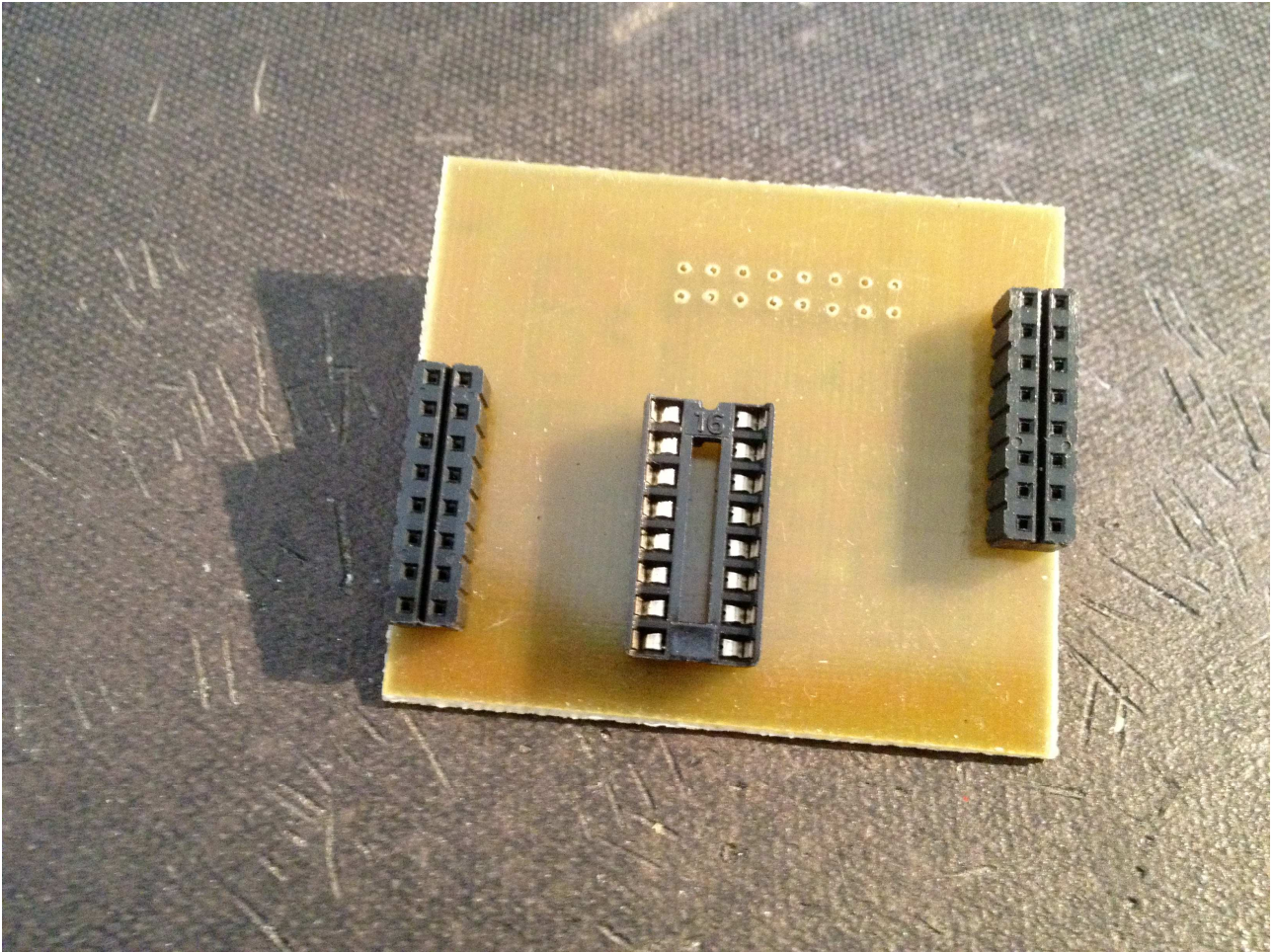


Place the eurorack module with its frontplate facing down.

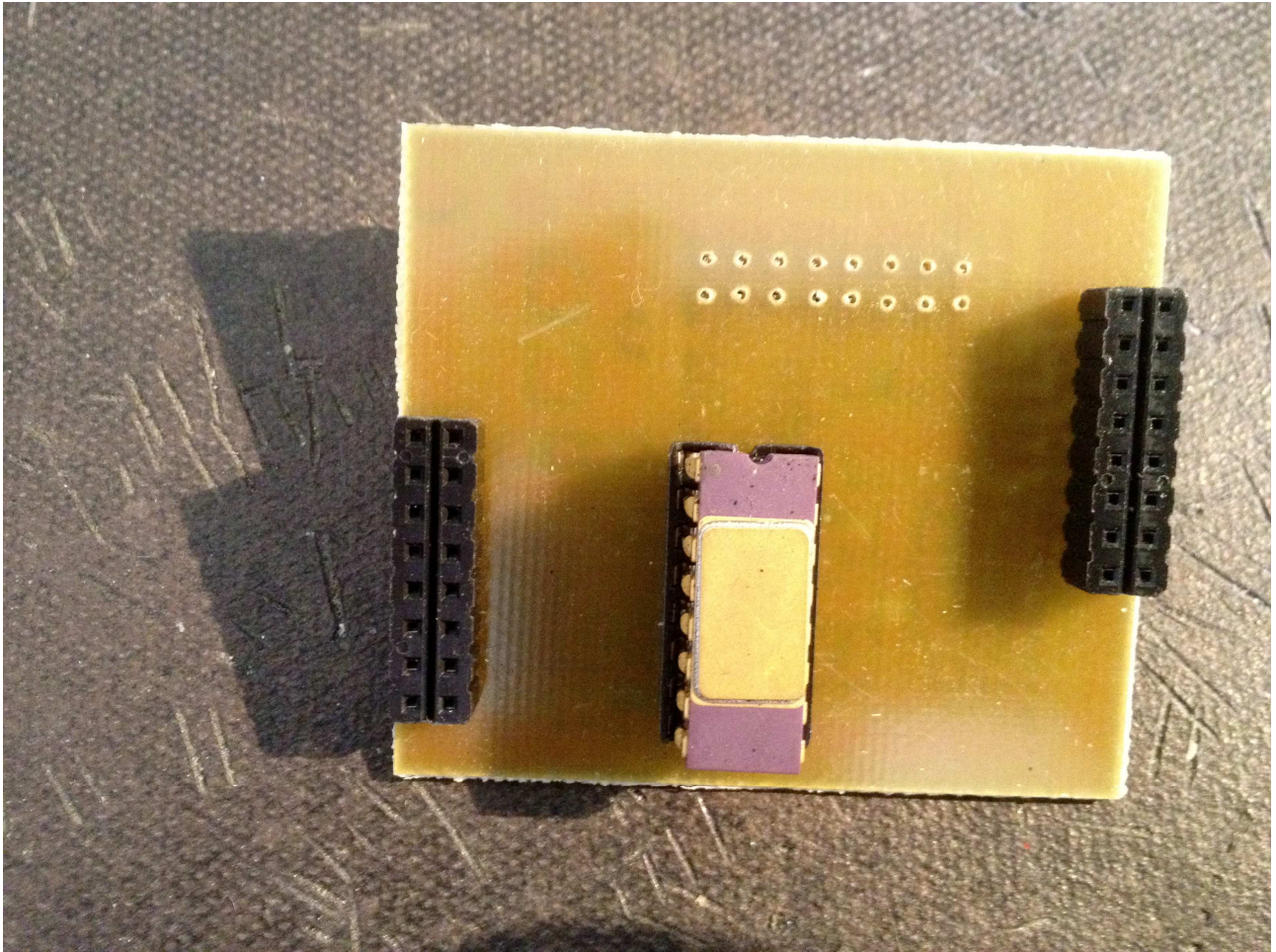


Remove the small board from the knob and jack board, using 2 hands.

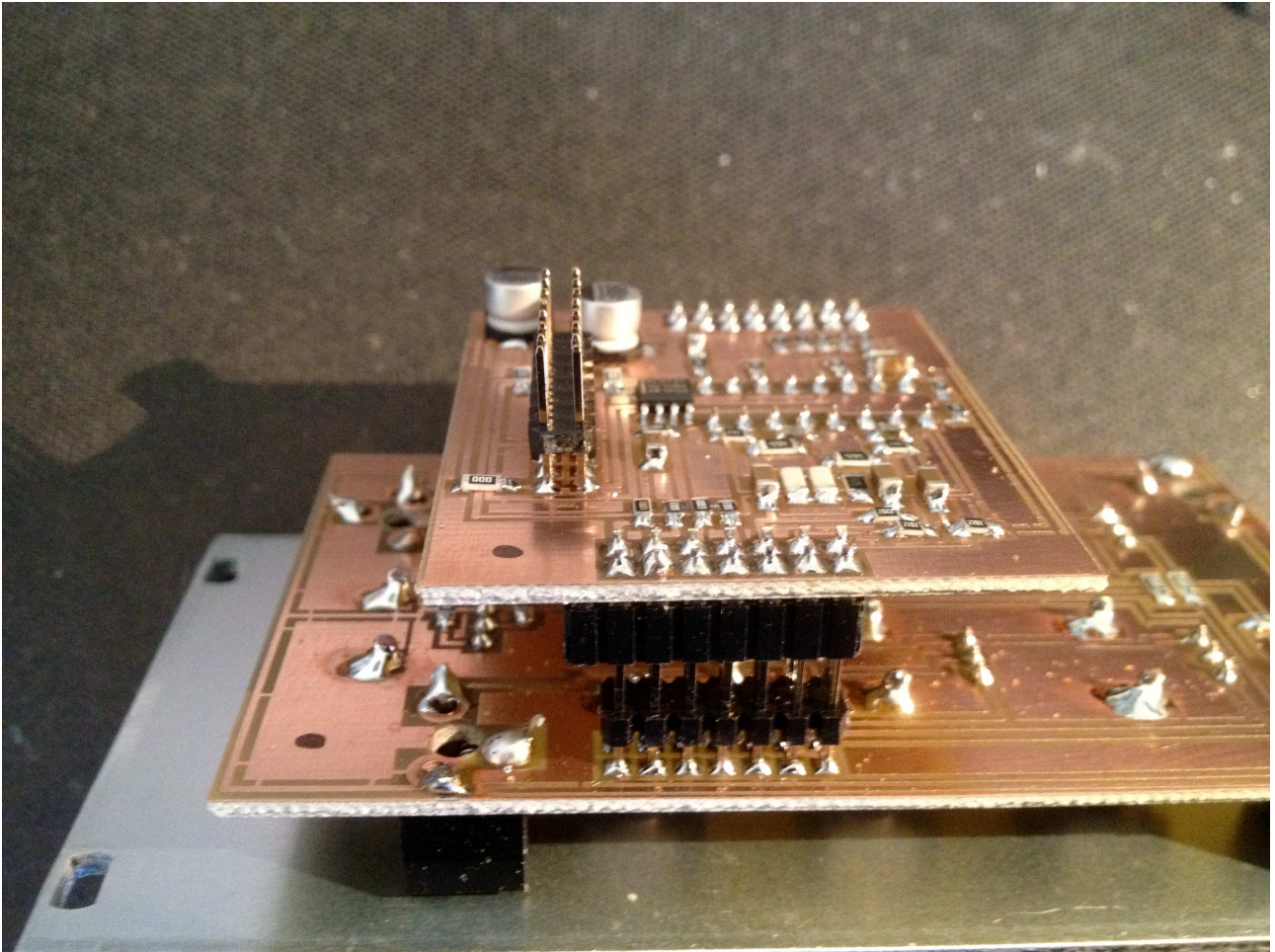




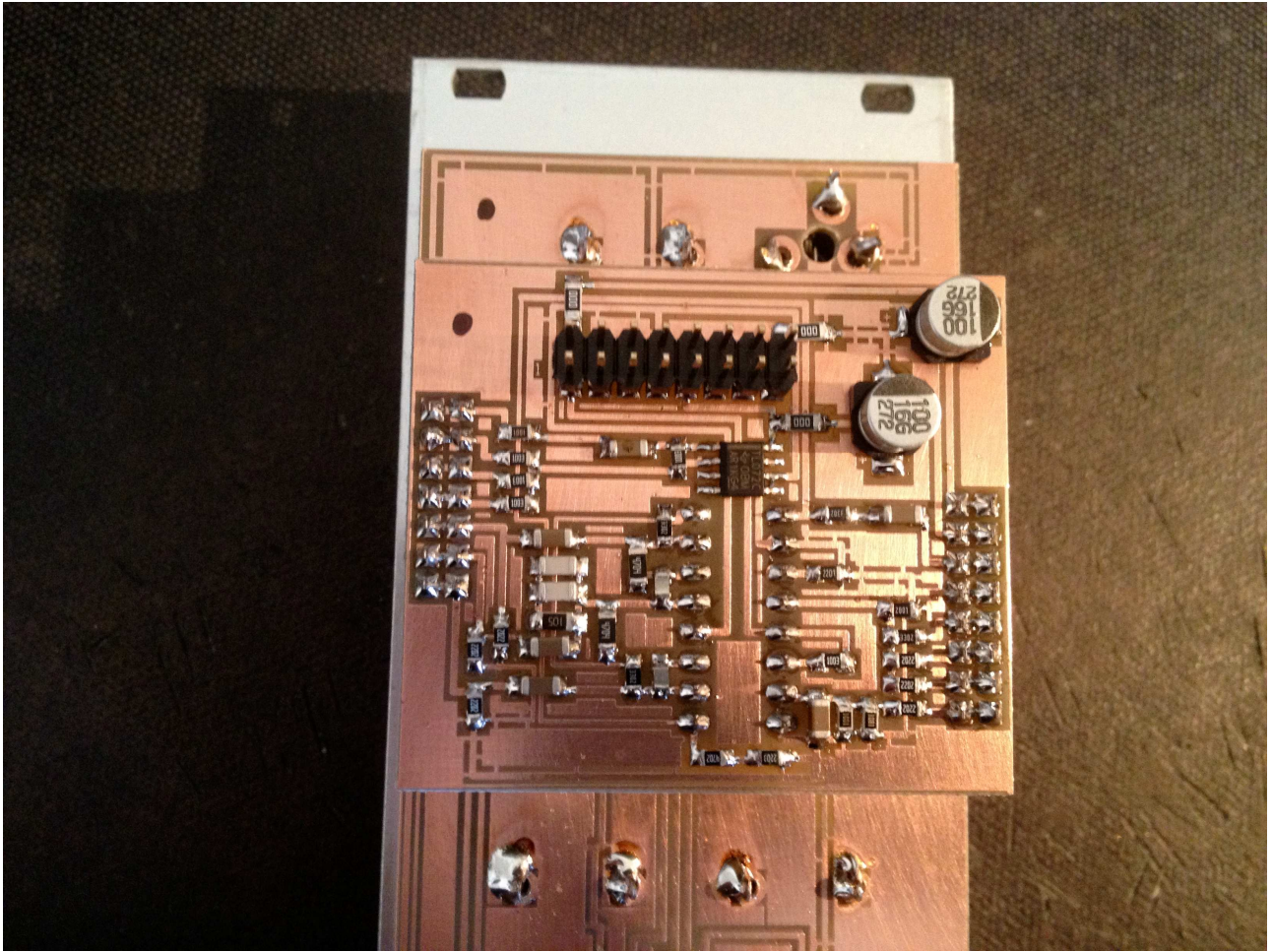
On the rear side of the small board, a socket is placed. This is for the IG00156 chip. Notice that in one end of the socket, there are a halfround hole. This has to match the same type of hole on the IG00156 chip.



Mount the IG00156 chip in the socket. Take care that it is placed in the direction as pictured, and that the pins fits perfectly to the pins of the socket.



Mount the board again. Notice that in one side only 14 of the 16 connections of the header is used. It has to be placed like on the picture.
On the other side all 16 connections are in use.



You are now finished. Please go ahead and test it.

GotharMusic 2013