

# Gotharman's Windy

*Digital Noise Generator Eurorack Module*



## User Manual

Thank you very much for purchasing / consider to purchase my Windy eurorack module.

Please read this manual before setting up your Windy, to avoid malfunction caused by wrong handling.

Windy are a digital noise generator with the controls Tune and PW –pulse width. Both of these parameters can be CV controlled.

I made Windy to get a versatile noise module, capable of producing many different shades of noise.

**Tune and Tune CV** – When turning or modulating this control, the noise signal is not only tuned, the noise character is also changed.

**PW** – This controls the density of the Noise signal. At center position the noise are as little dense as it can get. Turning PW down or up will give different results, depending on the position/modulation of the Tune parameter.



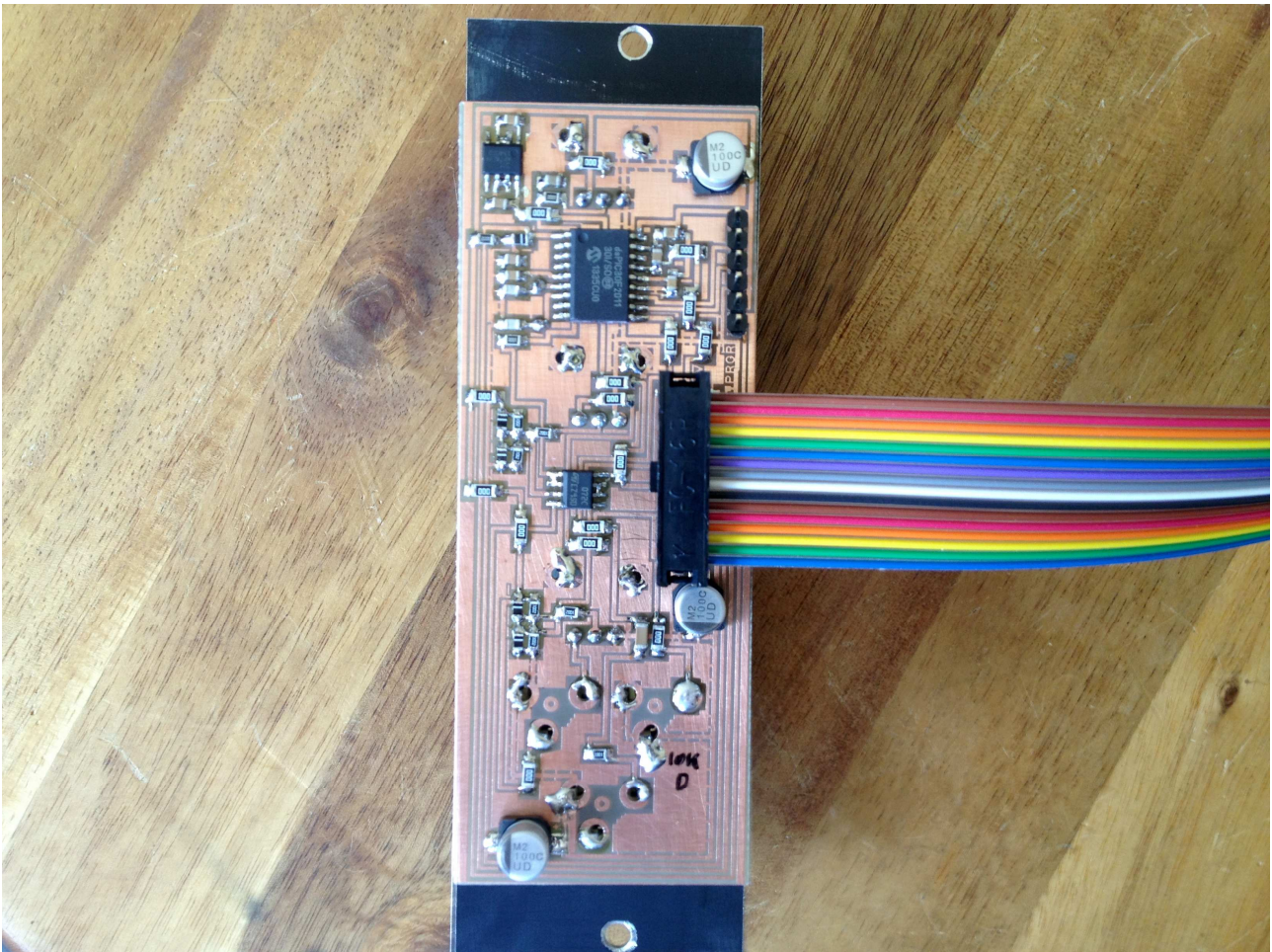
## Connecting The Power Cable

Windy should be installed in a Eurorack case.

It requires:

- 8 HP of space.
- +/- 12 volts. DO NOT connect it to any other voltage than this.
- 84 mA current.
- Connections to other Eurorack modules, using minijack cables.

If your Windy came with a multicoloured 16-cored flat-cable, the brown core should be placed at pin 1, pointing upwards, as shown on the picture. If it came with a grey/red cable, the red core should be connected to pin 1, pointing upwards.



Mount the other end of the power cable to the powerboard of your Eurorack case. Make sure, that pin 1, the brown core, is connected to -12 volt. Mount Windy in your Eurorack case, using screws.

## **Connecting With Other Modules**

The usual way of connecting Windy, would be to connect the Noise output to another audio input, like a filter, or a CV input, for using Windy as a modulator, and connecting modulation sources to the CV inputs, but this is modular, so please feel free to experiment.

It is though, not recommended to connect 2 or more outputs to each other. The only output on Windy is the Noise output. The CV connections are inputs.

## **Maximum ratings**

In case you connect your Windy to something outside your Eurorack system, you should take care, that these ratings are not exceeded:

**CV Inputs:** Should not exceed +/-12 volts.

Gotharman August 2014

[www.gotharman.dk](http://www.gotharman.dk)